

City of Playford

12 Bishopstone Rd, Davoren Park, S.A. 5113
Phone: 8256 0333 Fax 8256 0578

2008 / 2009 ANNUAL REPORT

To the SA Public & Environmental Health Council pursuant to Section 44 (1) of the
PUBLIC & ENVIRONMENTAL HEALTH ACT 1987

1 PUBLIC AND ENVIRONMENTAL HEALTH WORKFORCE

1.1 Environmental Health Staff Numbers

Please provide a snapshot of council's environmental health workforce on **30 June 2009** by completing the tables below.

This information is requested to inform State and National environmental health workforce initiatives.

Permanent full time employed environmental health officers (approx 38 hours/week) (30 June 2009)			
Full name	Qualifications	EHO experience (years/months)	Commenced working for council (date)
Amedeo Fioravanti	Associate Diploma in Environmental Health	16 years and 5 months	13 Oct 2008
Courtney Krake	Degree in Environmental Health	4 years 8 months	14 Oct 2004
Kirsty Haddock	Degree in Environmental Health	2 years and 10 months	10 Dec 2007

Permanent part time employed environmental health officers (30 June 2009)				
Full name	Qualifications	Average hours worked per week	EHO experience (years/months)	Commenced working for council (date)
Emily Post	Degree in Environmental Health	15.2 hrs	4 years and 1 month	9 May 2006

Temporary contract employed environmental health officers (30 June 2009) NIL				
Full name	Qualifications	Average contracted hours worked per week	EHO experience (years/months)	Contract start/finish dates

Contracted non-employee environmental health officers (30 June 2009)				
Full name	Qualifications	Average contracted hours worked per week	EHO experience (years/months)	Contract start/finish dates
Amedeo Fioravanti	Associate Diploma in Environmental Health	8	16 years and 5 months	June 2008 to Oct 2008

Environmental health officer positions vacant (30 June 2009) NIL				
Position type (fulltime/ part time/ contract)	Position hours/week	When the position was first advertised (date)?	Number of suitably qualified applicants (at 30/6/09)	Comments regarding this position.

Number (FTE) of Ancillary Staff that assist council to fulfil its responsibilities under the <i>Public & Environmental Health Act, 1987 (30 June 2009)</i>	
Immunisation Nurses	1 casual plus casual agency staff as required.
Administration	.8 FTE (2 part time admin)
Other (please specify)	1 Volunteer

1.2 Staff Training

Detail training and development implemented during the financial year to maintain/develop EHO or ancillary staff skills and knowledge.

During the reporting period staff associated with responsibilities pursuant to the Public and Environmental Health Act attended the following training opportunities

Environmental Health Officers

- DOH Legionella Regulations - High Risk Water Management Systems (3 EHOs)
- Regency TAFE Plumbing Course (4 EHOs)
- Mandatory Reporting (Child Abuse) (1 EHO)
- EHA State Health Conference (2 EHOs)
- Food Act Enforcement Seminar (1 EHO)
- Biolytix Waste Water Seminar (2 EHOs)
- Infection Control for Skin Penetration Seminar (2 EHOs)
- Executive Leadership Program (1 EHO)
- Master of Business Administration (1 EHO)
- Environmental Health Australia Special Interest Groups (4 EHOs)
 - Disease / Emergency Management
 - Food
 - Wastewater
 - Climate Change

Administration Officer

- Office professional seminar

Ancillary Staff

- Attending new schedule updates
- Pandemic planning workshops
- Country SAIN meeting
- Bi monthly SA immunisation network meetings
- Attendance at Baby expo – Wayville showgrounds at immunisation information booth
- CPR updates

PUBLIC & ENVIRONMENTAL HEALTH ACT & REGULATIONS

Complete details of measures taken under Part III of the P&EH Act (protection of public health relating to sanitation, drainage and protection of water supplies) & P&EH Regulations (waste control).

Section No.	Type	No. of complaints received	No. of notices served	No. of court / appeals / expiations
Public & Environmental Health Act, Part III				
15 & 16	Prevention / offences re insanitary conditions on premises	478	22	Court 3 Appeal 1 Expiations 5
17	Control of offensive activities	53		
18	Discharge of wastes in a public place	7		
19	Private thoroughfare	0		
20	Provision of adequate sanitation	3	1	
21	Pollution of water	0		
22	Closure of water supplies	0		
Regulations 1995 - Waste Control				
Reg. 19	Maintenance orders	20	6	0
Reg. 24	Connect to STEDS	0	0	0

2.1 Monitoring and management of Insanitary Conditions

2.1.1 Please briefly describe the chief causes of insanitary conditions reported (eg hoarded materials, pest infestation).

The chief causes of insanitary conditions within our council area are mostly confined to the following:

- Putrescible wastes and refuse
- Pest infestation, predominantly rats, mice and cockroaches
- Offensive odours
- Hoarded materials that allows harbourage for vermin
- Illegal discharge of waste (waste water effluent)

2.1.2 Please briefly describe the properties most implicated in the insanitary conditions reported (eg rental properties, privately owned).

The City of Playford has seen a shift in issuing insanitary condition notices on the South Australian Housing Trust (SAHT) now known as Housing SA. During the reporting period it was noted that the insanitary conditions notices issued were evenly distributed 50/50 between the SAHT and owner / occupied dwellings.

The City of Playford has endeavoured to further the working relationship with Housing SA Elizabeth. Council EHOs in partnership with Housing SA Officers have initiated and coordinated 'case conferences' to jointly manage and derive positive outcomes for difficult or chronic cases. Council Officers continue to request the attendance of Housing SA staff on inspections of their properties and inform Housing SA Area Managers when future intervention may be required on Housing SA properties.

2.1.3 Please briefly describe the primary impediments to resolving the insanitary conditions reported.

The primary impediments to resolving insanitary conditions in the City of Playford are varied and challenging. From a resident's perspective, the financial limitations and cost associated with the voluntary removal of refuse is a contributing factor. Cases that involve a third party such as the owner of the premises, particularly Housing SA, can prove challenging and may increase the level of complexity associated with the case.

From Council's perspective the prevalence of insanitary conditions associated with residents who experience mental health and/or disability issues is becoming more frequent and presents equally a significant impediment. Similarly, residents who lack basic life skills (the knowledge, ability and/or willingness to keep their premises in a sanitary manner) and the failure of residents to recognise their role in causing a public health issue remain considerable factors. Wherever possible, Council networks with support agencies, such as Anglicare and Northern Assessment and Crime Intervention Service (Northern ACIS) to provide support to the resident. Council based support programs (Home Assist) are also offered.

The City of Playford has identified a gap in support services for those residents aged between 18 and 60 years and that may or may not have mental health issues.

While Council can endeavour to link these clients with support services and agencies the process relies solely on the voluntary engagement and willingness of the resident to participate.

Before Council Co-ordinated Clean up



After Council Co-ordinated Clean up



The City of Playford is committed to ensuring positive health outcomes are achieved for all residents. The public deserves the right to be reassured and protected from disease and ill health associated with premises deemed to be in an insanitary condition. It is the vulnerable sections of the community most at risk who need extra support and protection. Included in these cases are:

- Children
- Elderly
- Mentally ill person(s)
- Physically disabled person(s)
- People suffering with drug and alcohol related issues

Much of the role of the EHO focuses around enforcement and achieving appropriate and timely responses to conditions that are both multifaceted and challenging in nature. One of the most concerning features of these cases arises when the person living in an insanitary condition returns the property to an unacceptable state within months of an enforced cleanup. It is the cyclical nature of these cases that creates ongoing public health, social and community concerns. Council is continually seeking ways to improve its response to these conditions and seeks State Government support to provide tools and action plans specific to the nature of these concerns.

2.2 Monitoring and management of Offensive Activities

2.2.1 Please briefly describe the offensive activities requiring the action described in the table above under the Public and Environmental Health Act 1987.

The type of offensive activities the council environmental health team dealt with during the reporting period included the following:

- Operation of combustion heaters
- Keeping of poultry, birds and other animals
- Odour generated from the operation of pet shops
- Poorly operating grease traps
- Operation of industrial businesses
- Operation of market gardens
- SA Water sewer vent pipes
- Operation of composting businesses
- Improperly maintained waste bins

3 PRIORITY OF PUBLIC & ENVIRONMENTAL HEALTH ISSUES

3.1 List the more significant environmental health issues currently facing the local community and what is being done to address them

Incidence of vermin:

All reports of suspected vermin presence and/or infestations are investigated. Educative advice and material is provided to the owner and/or occupier of the premises as well as disseminated to neighbouring properties. Residents may be asked to cooperate by carrying out work on their premises to minimise vermin attraction and harbourage. If residents fail to cooperate with Councils requests, or in instances where it is deemed necessary, remedial action is enforced.

In cases where pest infestation has occurred, including, but not limited to rats, mice and cockroaches, Council issues a Section 15 Insanitary Conditions Notice to ensure that pest control (along with other requirements) is met within a given timeframe. Failure to comply by the due date will result in Council engaging an external Pest Control Operator to ensure that adequate pest control methods have been taken to address the infestation. This is to ensure that the health of the wider community is protected.



Accumulation of refuse / extraneous materials:

Council Officers investigate complaints and enforce remedial action when required. This is due to the fact that refuse and extraneous material may provide harbourage and/or food source for rodents, cockroaches and/or other pests. At all times Environmental Health Officers adopt an educative approach and will attempt to engage the resident with support services where necessary.



Incidence of failing Waste control systems:

Investigation of alleged failed waste control systems are carried out by Council's EHO's upon receipt of a complaint or observation. This is due to the direct risk to health with untreated sewerage being directed to the surface with failing soakage trenches, or pooling of aerobic water with irrigation areas not being established. Many residents are unaware that what they are doing is illegal, and furthermore are unaware of the risk to health. Once brought to their attention, co-operation is sought to remedy the situation. Where necessary, Maintenance Orders are issued requiring the upgrade of failed/failing waste control systems.

Networking with Support Agencies

Council Environmental Health Officers have endeavoured to increase relationships/partnerships with external agencies such as Housing SA Elizabeth, Northern ACIS, Anglicare, the RSPCA, Families SA, Disability SA, Housing Improvement Branch, SAPOL and Northern Community and Youth Services (NACYS) to raise awareness of the public health issues faced in the City of Playford, and to facilitate the cooperation and instigation of support services for Playford residents.

Furthermore, Council tries at every opportunity to engage support services for our residents to not only achieve the public health outcomes, but to minimise the chance of repeat occurrence. In many cases, a 'task force' is created with a Housing Officer from Housing SA Elizabeth, Anglicare's Mental Health or Housing Support Officer (or both when required), and Northern ACIS to assist and support our community in not only rectifying the concern, but to help deal with the underlying issues that allowed the premises to get into the insanitary condition.

3.2 Prioritisation process

3.2.1 How was council made aware of these priority issues (eg investigation, research, complaint)?

The majority of the above mentioned issues were brought to Council's attention through complaints from the public, whether they are concerned neighbours, friends or family, and also through staff members and support services that are unable to assist until after the direct health risk has been remedied. Council also received a number of complaints from Housing SA Officers who have identified concerns during their routine home visits.

3.2.2 How were these issues prioritised (number of people affected, risk, politics)?

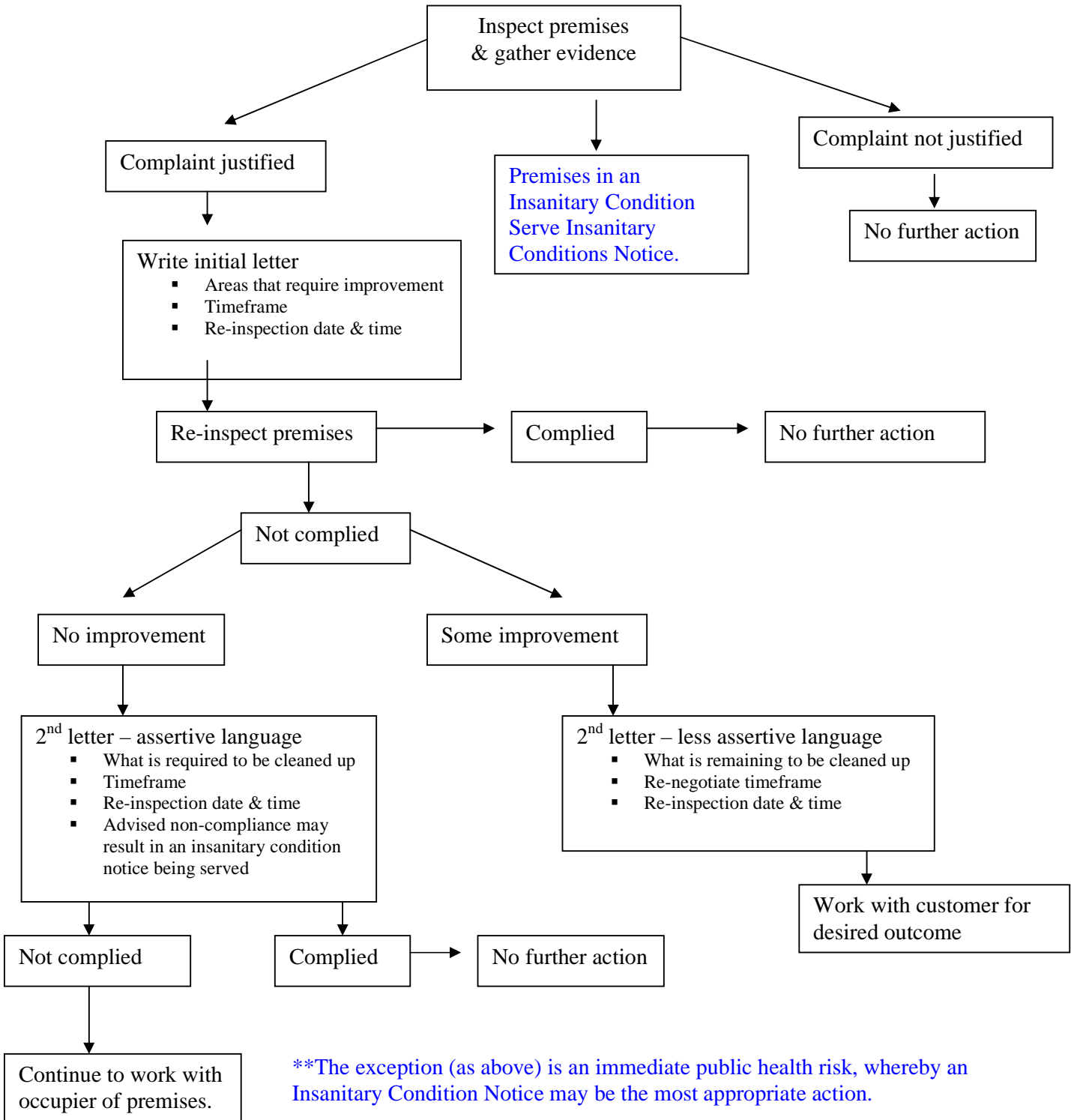
The City of Playford prioritises these complaints depending upon the public health risk presented. For example, an insanitary condition inside a dwelling comprising of a large amount of refuse, extraneous materials, excrement and a pest infestation will take precedence over a complaint about chicken keeping in a back yard.

Furthermore, Council considers the population that is affected, as to whether they fall into the venerable category. Also, Council considers the number of persons affected, however, in doing so do not devalue the risk to an individual.

In recent years council has developed and maintained standard operating procedures and decision trees to assist the health unit in their duties. Council is committed to ensuring all matters investigated are managed in a manner consistent with achieving positive health outcomes with fairness and impartiality.

GENERAL HEALTH COMPLAINTS PROCEDURE

**HEALTH COMPLAINTS
CITY OF PLAYFORD SOP**



****The exception (as above) is an immediate public health risk, whereby an Insanitary Condition Notice may be the most appropriate action.**

3.3 Detail any programs specifically aimed at dealing with public health issues related to vulnerable groups in your community (eg aboriginal, migrants, and the aged).

- We conduct a New Arrival Immunisation Clinic once a month on referrals from Migrant Resource and GP's and other council providers. We also have many of these clients coming through our mainstream clinics on word of mouth referrals.
- We stock Flu vaccine funded for Over 65's in our clinics for clients keen to avoid Dr's surgeries.
- Conduct vaccinations for childcare staff on request. Eg Flu and Whooping cough vaccines.
- As part of the 2009 Loud Actions Youth Forum the City of Playford worked with young people on the Youth Action team at Shine to create a presentation about sexual health. This presentation was then shown at the conference to 100 young people from Schools in the local area.
- The Remedy project (2008 and 2009) focuses on young people from the City of Playford engaging in a creative experience. Young people from different backgrounds will explore dialogues and activities that build resilience and strength. Indigenous young people, refugees, residents of the Peachey Belt area, young people who are engaging in criminal activities and those disengaging from school will be supported within this project.
- Worked with health and Indigenous services to provide an outreach presence in Fremont Park to support Indigenous people drinking alcohol in the park. Outreach included Aboriginal Sobriety Group visiting with their Mobile Assistance Patrol and providing support and transport; partnerships with City of Playford, Drug and Alcohol Services SA, SA Police and Marni Waendi (City of Playford's Indigenous learning and employment service).

4 DISEASE CONTROL

4.1 Monitoring of Pools & Spas (public aquatic facilities) to minimise the incidence of water-borne illness *(please complete the table below and provide details of any special activities, eg, training etc.)*

Type of Pool	Number in area	Number of routine inspections	Number of complaints	Number of Inspections related to complaints/investigations	Total number of inspections
Swimming	4	2	1	1	3
Spa	1				
Hydrotherapy	2				
Waterslide	1				
Other					
Total	8		1	1	3

Any Additional Comments?

Council EHO's are aware that many issues surrounding pool hygiene and water-borne illness can be effectively managed through ensuring pool operators have appropriate skills and knowledge.

4.2 Monitoring & investigation to minimise the incidence of Legionnaires Disease (please complete the table below and provide details of any special activities, eg, training, investigations etc)

Type of System	Number registered in area	Number of routine inspections	Number of complaints	Number of Inspections related to complaints/investigations	Total number of inspections
Cooling Water System	48	0			0
Warm Water System	12	0	5	0	0
Other	0				
Total	60				

Any Additional Comments?

The commencement of the Public and Environmental Health (Legionella) Regulations 2008, has formalised the operation, maintenance and management of cooling water systems and warm water systems throughout the State.

Prior to the commencement of the Regulations, in October 2008, the City of Playford contacted known system owners and informed them of the introduction of the new legislation. Council provided general information on key compliance dates and copies of the Regulations and associated Guidelines, produced by the Department of Health. In addition, Council has provided information and resources on its website to assist system owners.

The City of Playford has opted to evoke Regulation 15 (2) of the Public and Environmental Health (Legionella) Regulations 2008. Upon making this decision the Environmental Health Team set about advising existing system owners about the new regulations. This process included sending out information brochures, as well as a copy of the legislation and registration forms. It is anticipated that a notice will be forwarded to require owners of premises, on which a high risk manufactured water system is installed, to arrange for a 3rd party to carry out an inspection and also to arrange water testing of their system

Prior to the commencement of the Regulations, the City of Playford conducted audits of the documentation submitted as required; including maintenance and service reports, cleaning schedules and microbiological test results (Total Bacteria counts and *Legionella sp.* counts). Where necessary, follow up action was undertaken to ensure compliance with relevant Standards.

4.3 Monitoring and control of Waste Control Systems (eg. septic tanks, STEDS, CEDS)

Type of System	Number of applications	Number of routine inspections	Number of complaints
Septic Tank	26	12	9
Aerobic Waste Water System	109	53	10
Aerobic Sandfilter System	2	1	0
Other (name)	0	0	0
Total	137	66	19

Any Additional Comments ?

The City of Playford has introduced an inspection process that coincides with the private certification model that is utilised. The inspection is a preliminary inspection that determines if the location of the system complies with the relative standards and codes. Furthermore, this assists Environmental Health Officers in achieving a greater public health outcome by being able to identify problems with existing systems, and to minimise any problems with new applications.

Furthermore, the City of Playford has introduced a 'fast track' process for accurate and complete wastewater applications. The 'fast track' process is designed to provide a higher level of customer service, to reward the lodgement of accurate and complete waste water applications and to improve turn around time of wastewater applications. This may ultimately lead to more efficient processing of entire development applications.

Our aim is to assess and approve all accurate and complete 'fast track' applications within one (1) week of lodgement. However, if Council requires further information, the application will be taken out of the 'fast track' system and assessed within three (3) weeks of receiving the further information as requested. A comprehensive check list is provided with all relevant information to assist our customers in achieving an application suitable for the 'fast track' process.

The City of Playford has established a working party to review the current waste control assessment and approval process. The intent of the working party is to eliminate the private certification model and move to in-house staff assessed waste water applications with the addition of conducting underfloor plumbing and onsite waste water inspections. It is anticipated that implementation of the new assessment process will improve customer satisfaction and reduce the cost to applicants of seeking information for the purpose of submitting applications.



4.4 **Immunisation programs**

Please provide details on the number of clinics conducted during the reporting period

<i>Clinic Type</i>	<i>Number of Clinics</i>
Number of Council Operated Public Clinics	2
Number of School Clinics	14
Number of Internal (Council Staff) Influenza Clinics	1
Number of External Influenza Workplace Clinics	10
Number of Other Workplace Clinics	5
<i>Total</i>	32

Other Clinics

The City of Playford also offers the following services:

- 1 monthly New Arrival Refugee Immunisation clinic (NARI)
- 1clinic per school term at NACYS centre
- At call visits to Families SA to coincide with access visits
- At call home visits in tandem with Centacare workers
- Clare and Riverton Schools for their school program as well as flu vaccinations for the Clare & Gilbert Valley Councils

4.5 Notifiable Disease Follow Up

Provide details of actions resulting from notifiable disease notifications received from CDCB (insert a table if preferred)

The Communicable Disease Control Branch requested the assistance of Council Officers in the investigation of 5 notifiable diseases. The cases are listed below:

Notifiable Disease	No. of cases	Action Undertaken
Campylobacter	1	Discussion with patient regarding consumption of raw untreated milk. No the persons affected / implicated.
Salmonella	1	Discussion had with owner of facility regarding proper hand cleaning prior to serving of food. Educational response.
Shigella	2	Educational response. Inspection of premises and clearance of staff prior to return to work
Shiga-Toxin Producing E.Coli (STEC)	1	Collect sample of beef mince and send to IMVS for testing. Educational response and food history questionnaire conducted.

Council welcomes any opportunities to assist the Department of Health in confirmed cases of Legionella investigations. We believe that our in depth local knowledge plays a key role establishing and maintaining positive and proactive health outcomes.

4.6 Monitoring of Hairdressing, Beauty & Skin Penetration businesses

Type of Facility	Number in area	Number of routine inspections	Number of complaints	Inspections related to complaints/investigations	Total number of inspections
Tattoo Parlours	2	0	0		0
Hairdressing & Beauty Salons (including those that undertake skin penetration)	38		2	Cleanliness of Facility and sanitising hair cutting equipment.	2
Other					
Total	40	0	2		2

Any Additional Comments?

The current monitoring process for hairdressing, beauty and skin penetration premises is complaint based (i.e. reactive). It is envisaged that in the future Council will adopt one of the following disease control initiatives:

- Risk based inspection (high risk premises only). This is likely to include skin penetration facilities – tattoo and piercing premises
- Issuing self audit questionnaires to businesses
- Maintaining an inspection regime based on a 10% sample of known premises

4.7 Monitoring and control of Vectors and Other Pests (include level of activity, control measures, number/regularity of complaints, education programs etc)

Vector or Pest	Number of Complaints	Control Program (Y/N) (Please provide further details below)
Mosquitoes	7	Yes
Rodents	60	Yes
Head Lice	5	No
Flies	0	No
Pigeons	37	No
Scabies	0	No
Cockroaches	6	Yes
Bees	48	Yes
European Wasps	232	Yes
Other (please describe)	1 (Ants)	No
	1 (Fleas)	No

Description of control program (identifying vector/pest and activity undertaken)

Council has developed a series of fact sheets and standard advice letters to assist the community address any issues associated with nuisance/public health pests. These information brochures are designed to:

- Be easily understood (consistency & clarity)
- Provide up to date information
- Encourage community action and pest prevention

Rodents:

Council currently has a control program active in Fremont Park Elizabeth. Council Environmental Health Officers provide educative material and advice to the Playford community. If rodents are incorporated into an insanitary condition, Council ensures that adequate pest control is undertaken to remedy the situation. Failure to comply with the insanitary condition requirements results in Council engaging an external contractor as part of the 'clean up' process.

Pigeons:

Action taken at Council owned sites as deemed necessary. Currently at the Virginia institute, a catching program along with netting and spikes / wires is being used. At the Council depot netting has been utilised and the team sheds have been blocked off with strips of steel to try to stop pigeons from nesting.

Council receives a large number of complaints and enquiries from the public regarding pigeons and the perceived health risks associated with them. Council has made the decision to engage an expert to conduct a survey of nesting pigeons in our council area and then provided a report to determine what action (if any) may be taken by Council to reducing this pest.

Cockroaches:

Cockroaches at Council owned sites are treated by a pest control company on a regular basis. If cockroaches are incorporated into an insanitary condition, Council ensures that adequate pest control is undertaken to remedy the situation. Failure to comply with the insanitary condition requirements results in Council engaging an external contractor as part of the 'clean up' process.

Mosquitoes:

Programs to treat catchment areas and known trouble areas which we are notified by residents are carried out as required. These programs may include but are not limited to slashing of reeds etc. where practical.

European Wasps:

Tracking programs are carried out through out summer months where Council is notified of European wasp sightings. A total of 139 nests were destroyed.



Bees:

Bee hives located in areas that pose a risk to the user of any public space eg pathways or playground areas are treated and removed. When the hive doesn't pose a risk every effort is made to relocate the hive.

4.8 Monitoring & control of Animal Keeping Facilities (eg. domestic animals, petting zoos, kennels)

- Animal keeping facilities are assessed on their merits. In the last financial year a number of properties required action from Council regarding the keeping of non-domestic pets without approval. Those actions resulted in the removal of animals, including sheep, goats and pigs, without the need for further legal action.
- Council has several cat and dog keeping facilities in its area. An accurate number of each type of premises is not able to be obtained at this point of time.

4.9 Outline any preparation work done for Pandemic Flu

Upon receiving notification of the impending Pandemic Flu, staff from Council's People Services, and Environmental Health & Sustainability Team formed a working group to tackle how the Flu outbreak was likely to affect the City of Playford as an organisation. Many meetings were had to discuss issues such as isolation of affected staff, limiting overseas travel, increasing education regarding sanitation to all our buildings and providing antibacterial gel to all public areas of our buildings. Weekly advice was given to staff regarding any changes dealing with the flu epidemic including information being disseminated from the Department of Health.

A contingency plan was created to deal with staff absences and the approach to take if isolation of staff was to take place. This meant allowing for staff to work from home and being flexible regarding the types of leave that could be accessed for staff to access.

In the context of preparing for a response for the community the City of Playford refers to our Emergency Management Plan Part B Public Health Emergencies. Section 2.6 (see next page) deals with our actions relating to Pandemic Disease outbreaks.

2.6 Council Operational Objective and Treatments – Pandemic Disease

Note: Pandemic disease is likely to be characterised by a short lead time (some weeks) followed by 2-3 waves of infection occurring over some months (possibly up to 9-12 months duration in total).

Issue	Objective	Council Function/ Task <i>May include all or some of the following:</i>
<p>Pandemic disease</p> <p>causes may include:</p> <ul style="list-style-type: none"> ▪ human influenza ▪ emerging human disease (i.e. SARs) 	<ol style="list-style-type: none"> 1. Information regarding the likelihood of disease spread will be provided by Department of Health. 2. Plan for effects on community and Council. 3. Implement Business Continuity Planning strategies. 	<ul style="list-style-type: none"> ▪ Department of Health will advise Council of involvement. Council management should actively gain information from credible sources about an emerging or actual pandemic disease in order to assess risk. ▪ Extent of planning should be based on the degree of risk (i.e. likelihood & consequences) of infection in the community and staff. ▪ Operations Officer to liaise directly with local Emergency Zone leaders (i.e. SAPOL & Health) ▪ Maintain essential services by prioritising and providing back up arrangements for key council services. ▪ Implement health, safety and welfare policies and procedures for staff. (refer to LGA Pandemic Business Continuity Guidelines – link provided below) <p>Council Function/ Task <i>May include all or some of the following:</i></p> <p>a) Triage Facility</p> <ul style="list-style-type: none"> ▪ Provision of triage clinic building during maintenance phase of DoH plan. <p>Provide triage facilities in accordance with DoH Pandemic Plan – Playford Civic Centre will be required by DoH after QEH has exceeded capacity to receive and treat patients as a triage facility.</p>
<p>Issue</p>	<p>Objective</p> <ol style="list-style-type: none"> 4. Assist DoH in the provision of community health clinics 	<p>(b) Contribute to Mass Immunisation</p> <ul style="list-style-type: none"> ▪ Once vaccine has been developed (i.e. potentially 6 months after human to human pandemic isolated) it is likely that a protective vaccine will be provided via mass immunisation clinics. ▪ Mass immunisation clinics will be coordinated by the SA Immunisation Coordination Unit (DoH). ▪ Distributing information and advice to the community ▪ DoH mass immunisation plan
	<ol style="list-style-type: none"> 5. Assist DoH in the provision of community health clinics (cont) 	

		<p>indicates Council Immunisation RN will be required to coordinate some immunisation teams.</p> <ul style="list-style-type: none"> ▪ Other logistical requests from DoH include: ▪ Use of refrigeration and storage areas ▪ Receipt and storage of vaccines (to be kept under strict controlled conditions), equipment, forms etc. ▪ Provision of medical waste disposal via existing Council 'sharps' (biohazard) waste system.
	5. Determine community recovery needs.	DFC is the lead agency in emergency recovery operations in SA. Council's Community Development Staff to assist DFC.

4.10 Other

No Report

5 PUBLIC & ENVIRONMENTAL HEALTH MANAGEMENT PLAN

5.1 Does Council have a current Public & Environmental Health Management Plan or Strategic/ Corporate Plan that forward plans the environmental health activities of Council?

NO

IF NO

Does Council expect to produce one within the next 2 years?

YES – The plan is now in draft form and will be finalised by December 2009.

6. HEALTH EDUCATION / PROMOTION & COMMUNITY CONSULTATION

Include Council initiatives, activities and programs designed to promote public health issues to the community including those delivered in partnership with others. (eg. training sessions, workshops, radio interviews, presentations / education sessions to schools/community groups, educational materials produced, newsletter articles, studies or trials). Provide details of consultation and community involvement, the variety of communication tools used (eg. local newspaper/radio, Council pamphlets, shopping centre displays) and how projects are evaluated.

Immunisation

- Attendance at Baby Expo at Wayville to promote immunisation and also our own council clinic. Handed out timetables etc.
- Attended Community Well being Expo held by council. Provided information and also vaccinations for clients.
- Attended Para West Campus to promote HPV vaccine, vaccinated clients and some staff also.
- Attended group at primary school Refugee Expo. Promotion of clinics and information

Community Services

- Family Links (FaHCSIA funded) supports children and families through child care services, to build connections in the community. Activities include training to upskill child care workers, parenting support for families, Family Expos to show-case local services to the community, information on parenting groups' brochure, supporting the production of domestic violence information, etc.

- Immunisation services are provided by the City of Playford – 2 clinics per week and New Arrivals and Refugees Immunisation (NARI) monthly, as well as school immunisation program and flu vaccines for businesses.

Environmental Health

Disseminate educational materials to the Playford community:

- Food Safety Kits
- Fight the Bite mosquito information
- Cryptosporidium/pool safety information
- Combustion Heaters information
- Provide advice and educational information regarding head lice
- Vermin prevention and harbourage information
- Food safety presentations to schools/community groups, aged care facilities and food handlers regarding prevention of disease transmission via adequate hygienic processes such as cleaning of hands after toileting, smoking, coughing, blowing noses etc. Ensuring proper temperature control is provided for at risk foods, preventing cross contamination of raw and cooked foods etc
- The City of Playford has developed the following pamphlets that cater to the needs of the Council area:
 - Rat control and prevention,
 - Guidelines for keeping poultry,
 - Feral Pigeons; and
 - Home composting.
- Being involved in multi faceted task groups when dealing with hoarding and insanitary conditions affecting the young and the elderly. The aim is to assist families with adequate support and education to ensure that measures are placed to prevent future occurrences from happening
- Providing pre-lodgement advice regarding onsite waste control systems
- Providing advice and direction in regards to failed waste control systems as a result of complaints and enquiries

7. ENVIRONMENTAL MANAGEMENT & SUSTAINABILITY

Provide details of activities designed to reduce and prevent exposure of individuals to health hazards. May include number/types of complaints received, issues dealt with, concerns, inventories held etc.

7.1 Monitoring to ensure Potable Water (eg. rainwater tanks, bores)

Regular testing of the One Tree Hill water supply is carried out. The test covers coliforms and E.coli as well as temperature.

7.2 Monitoring to ensure Water Quality / Protection of Waterways and Catchments

Water quality monitoring is carried out at a number of sites across the Playford region such as Fremont Park lake at Elizabeth Park as well as at Stebonheath Flow Control Park, Andrews Farm and Adams Creek wetland.

At Fremont Park lake, water is currently tested for pH, temperature, E.coli and coliforms while water at Council's constructed wetlands is tested for a much wider range of possible contaminants such as pesticides, herbicides and heavy metals, as well as E.coli, coliforms etc. These wetlands here are used to cleanse stormwater prior to it being injected via the Aquifer Storage and Recovery (ASR) unit into the underground aquifer during the winter in readiness for extraction during drier months for irrigation of local parks and school ovals. The analytes tested at these facilities are in line with ASR licence conditions. Further testing of water bodies will take place as more ASR's are developed and used to store water for later use.

7.3 Waste Management Practices (domestic waste, landfills, green waste, recycling, solid waste, hazardous waste) (eg. types and regularity of services)

- The City of Playford, through its contactor the Northern Adelaide Waste Management Authority (NAWMA) provides residents with the following regular kerbside collection services:
 - General waste – weekly collection of 140-litre bin
 - Recyclables – fortnightly collection of 240-litre bin
 - Green (garden) waste – fortnightly collection of 240-litre bin (on a user pays basis)
- Council has been running hard waste collections on a suburb-by-suburb basis (conditional on assistance from a community organisation) since June 2002. In February and March 2006, a kerbside hard waste collection was provided for all remaining suburbs. From January 2008, the City of Playford has offered all residents one Hard Waste Collection per household per year. This is based on a suburb-by-suburb collection system and bookings are required.
- In May 2009, the City of Playford held a once-off Hazardous Waste Collection and Electronic & Electrical Recycling day at the Council Depot. This Day was held with the assistance of ZeroWaste SA, with the City of Playford providing the funding.
- The Northern Adelaide Waste Management Authority (NAWMA) operates a balefill-style landfill operation within the Council area. As part of the management of this site, NAWMA co-ordinates a Balefill Management Consultative Committee comprised of community members as well as staff from the City of Playford, NAWMA and the EPA. This committee provides a forum for community members and other stakeholders to raise any issues with respect to the management of the site. Typical agenda items include discussion of any observations in relation to odour, noise, dust, escaped litter or flies etc.
- Similarly, the Jeffries Group operate a green waste processing facility within the Council area. A council staff member sits on the Jeffries Community Consultative Committee to ensure any issues with management of the sites are appropriately addressed, including noise, dust, odour, flies etc.

7.4 Monitoring of Contaminated Land

During the reporting period no investigations were undertaken regarding potential contaminated land.

7.5 Monitoring and Control of Hazardous Substances (eg. asbestos, medical waste)

- Council maintains a current asbestos register covering all Council-owned facilities.
- Council also maintains a Dangerous Goods Register.
- A sharps disposal service continues to be offered. A series of sharps containers are provided at strategic locations throughout the Council area and emptied on an as needs basis. All Council works trucks also have a sharps container on board. Council maintains a Syringe Register which tracks general information on the locations, timing and volume of syringe dumping throughout the Council area. This information is shared with the northern suburbs Drug Action Team via Council's community services group.

7.6 Monitoring of Air Quality

N/A

7.7 Noise Complaint Investigations

N/A

7.8 Monitoring and Control of Recreation Facilities (eg. risk assessment of playgrounds, inspections of camping areas etc.)

The City of Playford conducts regular inspections and maintenance of Playground facilities in accordance with the relevant Australian Standards.



7.9 Emergency Planning Activities (eg. disaster recovery / business continuity plans)

The City of Playford and Town of Gawler have an emergency response, mitigation and recovery plan for the region.

The plan consists of 2 key parts:

- Part A of the plan provides a context to emergency planning and outlines operational standards associated with managing significant emergency incidents in the local community.
- Part B of the Plan consists of a series of council specific response plans and supporting registers that have been developed in collaboration with the control and supporting agencies and council technical experts. In prioritising the response plans included in Part B, a series of risk workshops were undertaken to identify the major hazards facing our community. Plans have been completed for the following hazards:
 - Flood and Extreme Weather
 - Fire hazard
 - Public Health
 - Essential Services; and
 - Animal and Plant Disease.

Part B of the Plan also contains a recovery response plan and media plan to guide staff in the management of communications and the recovery process.

The plan has been developed in consultation with State Government agencies, relevant staff across both council and utilising information from other emergency related projects and events.

Emergency Management planning is an ongoing process that requires regular changes and updates to the plan. To formalise council's support for ongoing emergency planning, a Community Risk Management Policy was developed and was approved by full Council on 12/8/08.

The next part of the Emergency Planning process will be Business Continuity for council. Work has already commenced on this process and it is anticipated that this will be completed in the near future across the organisation.

7.10 Rural and Urban Planning Activities (eg. number of development applications assessed by EHOs)

Environmental Health Officer's are involved in assessing waste control in non-sewered areas within the City of Playford. This includes pre-lodgement advice on large proposed land divisions and boundary realignments / developments through Council's Land Division Assessment Unit (LandAU).

The City of Playford's Planning Department refer development applications to Environmental Health Officer's for comment on Food Shop Fit - outs & Supported Residential Facilities and other public and environmental health matters.

The aim of forwarding the plans and information to the team is to allow the Environmental Health Officers the chance to identify areas of concern with locations of hand basins, working space design, fixtures and fittings etc. Bringing areas of concern to the proprietors attention from a plan perspective is far more effective than having to deal with needing retrospective changes that usually become costly once the premises has been completed.

7.11 Other

N/A

8. OTHER

Please provide details of any other public & environmental health issues encountered by Council. (eg, complex investigations, participation in major events and festivals, strategic planning and implementation programs etc)

Students

The City of Playford continues to support Flinders University teaching program for EHO's. Council offers a position of placement for second year students for a week to provide them with work experience and exposure to the workplace. Students are fully supervised and supported whilst on work placement and the staff ensure a broad range of activities are provided.

Staff Health & Wellbeing

The City of Playford recognises that staff health and safety is of paramount importance. Often EHO's will face challenging and confronting situations that may require a level of intervention to ensure the officer has a mechanism to deal with trauma and stress. With the nature of the work undertaken by EHO's it is imperative that appropriate support structures are provided. Examples of these supports (both formal and informal) include:

- Inter team debriefing (with colleagues)
- Debrief with supervisors and managers
- Confidential counselling support through the Employee Assistance Program (EAP)
- Training by a psychologist as to detachment techniques from complex and involved cases.

Date this report is to be presented to Council 13 October 2009

This report is to be submitted by 30th September 2009 in soft copy emailed to:

andrew.vickers@health.sa.gov.au

Please note that hard copies are no longer required to be sent to the Public and Environmental Health Council.